

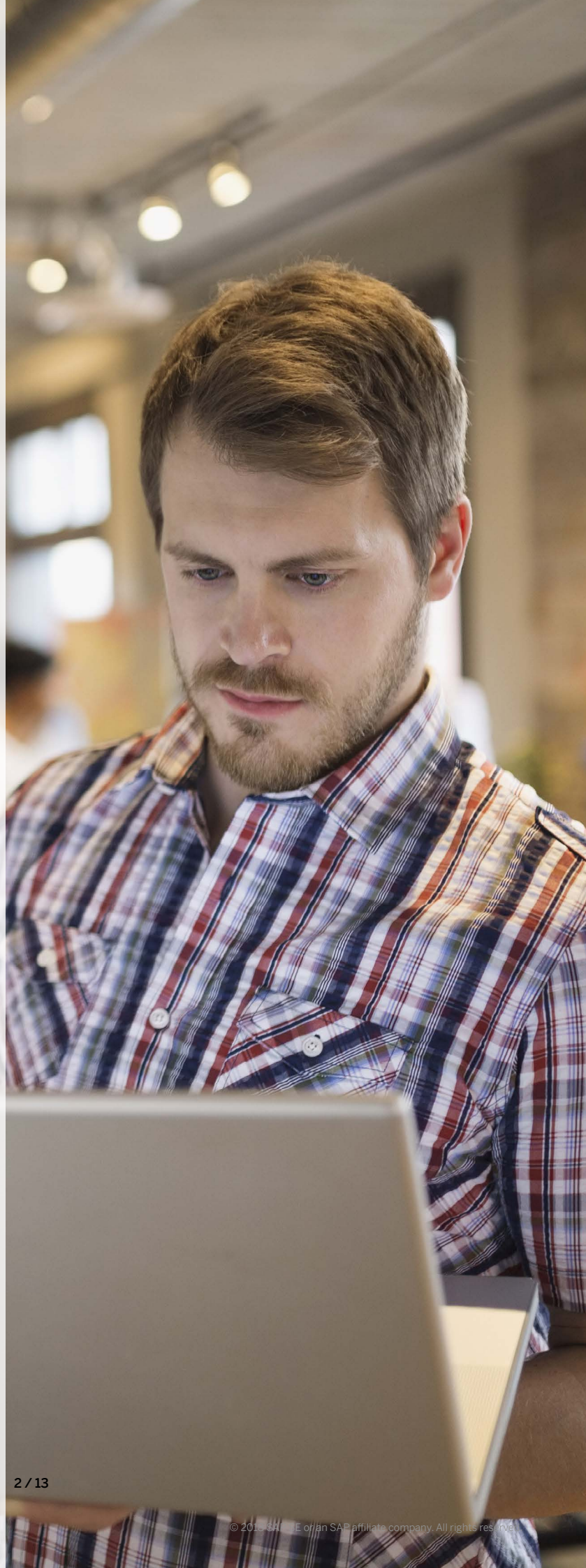


SAP Solution in Detail | PUBLIC  
SAP HANA

# **SAP HANA®: The Only Business Data Platform for The Intelligent Enterprise**

# Table of Contents

- 3 Quick Facts**
- 4 Accelerate with Simplicity**
- 5 Reimagine Your Database**
- 6 Act with Live Intelligence**
- 7 Innovate with Confidence**
- 9 Optimize Data Access, Integration, and Quality Management**
- 10 Achieve Cloud Freedom**
- 11 Maximize Availability and Reduce Administration**
- 12 Security and Data Protection**
- 13 Tally the Benefits of Deploying SAP HANA**





# Quick Facts

---

## Summary

The SAP HANA® business data platform is unrivaled, combining a robust database with services for creating innovative applications. It enables real-time business by converging transactions and analytics on one in-memory platform. Running on premise or in the cloud, SAP HANA untangles IT complexity, bringing huge savings in data management and empowering decision-makers everywhere with new insight and predictive power.

---

## Objectives

- Accelerate response and analysis while simplifying IT
- Acquire and integrate data from a wide range of sources to boost visibility
- Uncover new insights to help stakeholders work smarter
- Ride the next wave of change with innovative new applications
- Maintain security and business continuity

## Solution

- Advanced in-memory processing to eliminate latency
  - Real-time insight from Big Data and the Internet of Things
  - Integrated data management that increases scalability and lowers complexity
  - Support for modern applications that use geospatial and streaming data
  - Tools to keep business secure, minimize downtime, and support compliance with security standards
- 

## Benefits

- Accelerate data processing for real-time insight and action
  - Draw insight from complex data sets and ongoing transactions without compromising data privacy
  - Reimagine business processes and create innovative applications
  - Achieve business agility and streamline IT
- 

## Learn more

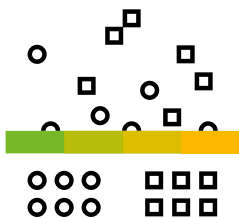
For more on using the SAP HANA business data platform, visit [sap.com/hana](https://sap.com/hana).

## Accelerate with Simplicity

An intelligent enterprise requires a business-ready data platform that helps you **find the signal in the noise and unleash your data's potential** for better business outcomes. The SAP HANA® business data platform provides the next-generation data management foundation for all of the industry-leading SAP® solutions. It also enables development of cutting-edge applications to deliver intelligent solutions for the enterprise quickly.

SAP HANA is one of the first data management platforms to handle both transactions and analytics in-memory on a single data set. It converges a future-proof database with advanced analytical processing and capabilities for application development, data integration, and data quality. Embedded in a robust, state-of-the-art security

framework, it supports compliance with the latest security standards and data protection regulations. You gain a single secure environment for all your mission-critical data assets. You can manage large volumes of structured and unstructured data efficiently, leveraging the value of your business data while improving total cost of ownership (TCO).



With SAP HANA, you can **manage large volumes of structured and unstructured data** efficiently, leveraging the value of your business data.

## Reimagine Your Database

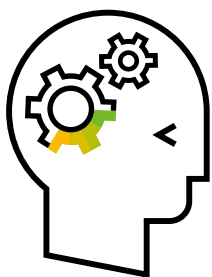
SAP HANA is built on an in-memory columnar store that is optimized for both transactional and analytical workloads, enabling the benefits of multicore processing, modern storage technology, and the single-instruction, multiple-data instruction set. It's fully compliant with requirements for the atomicity, consistency, isolation, and durability (ACID) standards.

Intuitive modeling tools and preconfigured function libraries let you run complex business logic directly inside the database. That means you avoid latencies from moving data between the database and application server tiers.

Multitenant databases can be managed as one while maintaining their isolation from one another. The data tiering capabilities of SAP HANA, such

as extension nodes, allow you to maximize your value by balancing performance and cost of data storage. This enables administrators to control which data is kept in-memory and which is kept in alternative persistent data storage. At the same time, the multistore tables in SAP HANA mean that where and how data is stored is completely transparent to consuming applications.

SAP HANA supports the new Intel Optane DC persistent memory, enabling it to process larger volumes of data in real time with increased memory capacity while reducing TCO. This improves business continuity and reduces downtime, as data is persistent in main memory. To learn more, visit [www.sap.com/persistent-memory](http://www.sap.com/persistent-memory).



SAP HANA supports the new Intel Optane DC persistent memory, **enabling it to process larger volumes of data in real time** with increased memory capacity while reducing TCO.

## Act with **Live Intelligence**

SAP HANA provides next-generation hybrid transactional and analytical processing (HTAP) with the broadest advanced analytics capabilities to help business leaders understand information in context and achieve situational awareness to act in the moment. This includes native high-performance predictive and machine learning algorithms and integration with TensorFlow and R to reveal meaningful patterns in data and build applications that can learn and automate manual business processes. Text analysis and search capabilities help extract real insights from unstructured textual data in many different languages. Administrative boundary content, advanced services such as geocoding, and

spatial services available in the cloud help accelerate development of location-aware business applications.

SAP HANA can store and query streaming data from sensors, plant equipment, and Internet of Things devices; time-series data such as price fluctuations and information on machine efficiency; and highly interconnected graph data. It also provides a JSON document store. These powerful capabilities can be leveraged with standard SQL, enabling data to be combined from standard relational databases, spatial and graph data, and data stored in a JSON document. A wealth of new possibilities helps you reimagine business models.



**SAP HANA can store and query streaming data** from sensors, plant equipment, and Internet of Things devices and time-series data.

## Innovate with Confidence

To achieve business insight in real time, SAP HANA helps you innovate with confidence. You can analyze sensitive data while effectively aligning with compliance requirements with real-time data anonymization. State-of-the-art techniques such as k-anonymity and differential privacy render personal data disconnected from an individual. This empowers business users and data scientists to “know without seeing” and explore new business opportunities for data as a service.

SAP HANA connects with existing applications using open standards and offers a choice of ways to build applications that are Web based or based on microservices. SAP Web IDE for SAP HANA offers a comprehensive lightweight tool set for data modeling and application development.

Complex security authorizations can be easily shared between native applications and extensions running on SAP HANA and SAP business applications.

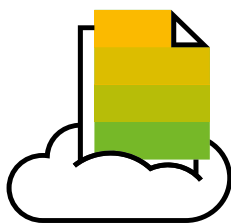
The SAP Enterprise Architecture Designer Web application is designed to model data for building enterprise architectures. Its cloud edition is available as an application service on SAP Cloud Platform. You can start with architecture and design and transfer models between on-premise and cloud versions in hybrid cloud environments. ABAP® programming language programmers and users of SAP PowerDesigner® software can exploit the power of SAP HANA with their preferred tools as well.



**SAP HANA connects with existing applications using open standards** and offers a choice of ways to build applications that are Web based or based on microservices.

The application development capabilities of SAP HANA include support for a variety of programming languages, including JavaScript (Node.js), Java, and Python, but they also let you bring in additional languages and runtimes. SAP HANA contains several embedded business functions, such as discounted cash flow and interest rate management, to accelerate development. The functions run inside the database for optimal performance and can be called directly from SQL or used within SQLScript. SAP HANA includes a framework that lets you create your own data processing algorithms to run inside the database. You can build enterprise-class non-SQL (NoSQL) applications with support to store schema-flexible data in JSON format. You can combine JSON data with structured data, then query or analyze it using SQL.

The express edition of SAP HANA can be used for developing real-time applications directly on your PC, Mac, or private cloud. Examples of what you can develop include personal learning, group training, testing, demo, and validation software as well as software for productive use. The express edition features all SAP HANA 2 support package stack 3 enhancements, including support for the Kubernetes open-source container-orchestration system. You can download the express edition for free from [www.sap.com/sap-hana-express](http://www.sap.com/sap-hana-express). You will also find it listed on AWS Marketplace and Google Cloud Platform, Microsoft Azure, and Huawei Cloud marketplaces. An additional container image has been added in the Docker Store.



**The express edition of SAP HANA** can be used for developing real-time applications directly on your PC, Mac, or private cloud.



## Optimize Data Access, Integration, and Quality Management

SAP HANA offers built-in functionality to virtualize access to data within the enterprise in order to deliver unprecedented information agility. Data can easily be integrated, cleansed, and synchronized with SAP HANA. This includes support for connecting to and federating highly optimized queries to remote sources. It is all transparent to the consumer while delivering trusted data to the enterprise with ease.

With smart data access, you can federate queries to external data sources, such as other databases, Apache Hadoop, and Apache Spark, to perform queries without costly data movement. When you need to move data into SAP HANA in batch or real time or from SAP HANA to other software

systems, smart data integration helps you do so to support informed decision-making with complete visibility. With smart data quality, you can parse, standardize, and validate attributes such as name and address; perform geocoding; and identify duplicates and relationships between entities.

Finally, features for remote data synchronization help you synchronize data bidirectionally between SAP HANA and the SAP SQL Anywhere® suite. The remote data may be embedded in devices or applications on the edge, beyond the reach of high-bandwidth connections. That means you can synchronize data on the edge and shorten response times across the enterprise.



Features for remote data synchronization **help you synchronize data bidirectionally** between SAP HANA and the SAP SQL Anywhere suite.

## Achieve **Cloud Freedom**

To help you maintain agility, SAP HANA scales up and out to support many deployment scenarios and is available for use in public and private cloud environments. For on-premise installations, SAP HANA supports performance-optimized deployment on hardware appliances from SAP partners, as well as the tailored data-center integration model, which lets you use existing hardware and infrastructure components for your deployment of SAP HANA software.

A hyperconverged infrastructure (HCI) provides an IT framework that combines compute, storage, network, and other components in a single system. This simplifies management of your private cloud deployment. It can build the bridge to the public cloud, reduce data center complexity, and increase scalability. You can learn more by accessing the [hardware directory](#) for certified and supported hardware for SAP HANA.

The multi-cloud capabilities of SAP HANA are extensive. Customers can develop once and deploy anywhere. They can manage, deploy, virtualize, move, and scale from on-premise, hybrid, or any cloud infrastructure supported by SAP or third-party software. As a result, customers can avoid vendor lock-in and integrate with other cloud-native services to build composite applications.

In the cloud, SAP HANA is available as a comprehensive infrastructure combined with managed services, consumable through SAP Cloud Platform and the SAP HANA Enterprise Cloud service or through other third-party cloud services. Examples include Amazon Web Services, Google Cloud Platform, IBM Cloud, and Microsoft Azure. For details on deployment options for SAP HANA, refer to the "[Landscape Definition Guide for SAP HANA](#)."



**The multi-cloud capabilities of SAP HANA are extensive.** Customers can develop once and deploy anywhere.

# Maximize Availability and Reduce Administration

SAP HANA protects your business against a broad range of outages, from software error to natural disaster. You can minimize downtime and shorten recovery times using multitier and multi-target secondary systems and one of several high-availability and disaster-recovery solutions delivered with SAP HANA. You can offload read-intensive workloads to secondary systems with the SAP HANA active/active read-enabled option for additional load balancing and hardware utilization.

Several tools help you monitor infrastructure health:

- The SAP HANA cockpit is a Web-based tool that lets you manage and monitor multiple

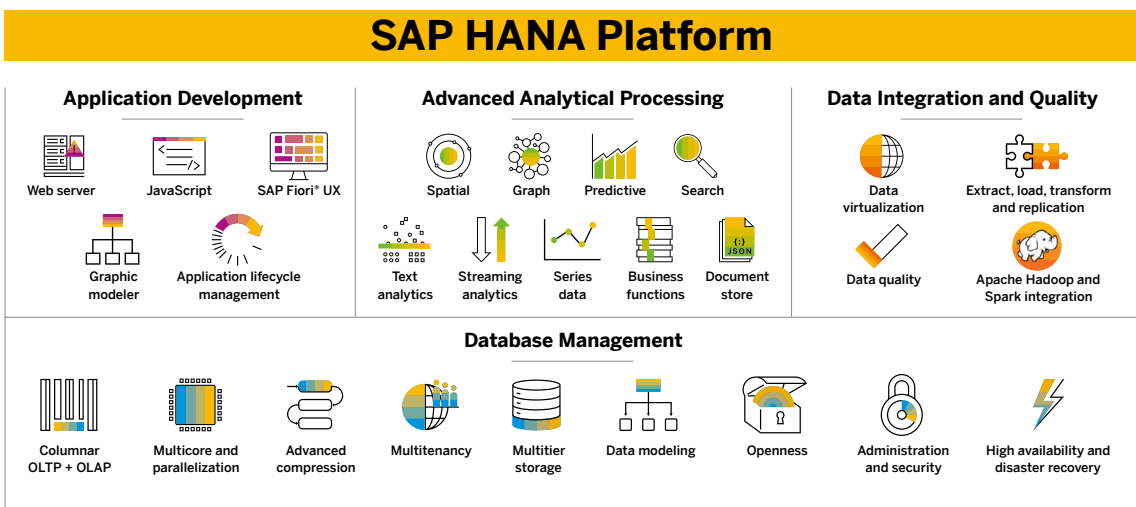
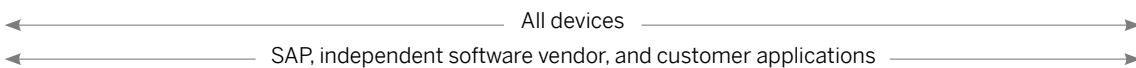
instances of SAP HANA. A security dashboard in the cockpit helps you meet compliance requirements with confidence and operate applications running on SAP HANA on the same solid security foundation.

- SAP Solution Manager supports holistic monitoring of SAP applications running on SAP HANA.
- A modern tool set for platform lifecycle, performance, and landscape management, operations, and automation provides in-depth insights on query execution plans and resource utilization.
- SAP Landscape Management software is another tool to help you simplify and standardize the management of your SAP landscape.

**Figure: SAP HANA – In-Memory Platform to Build Next-Generation Applications**

## SAP HANA: The business data platform for all applications

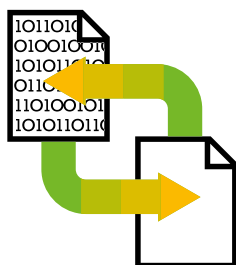
Accelerate with simplicity | Act with live intelligence | Innovate with confidence | Achieve cloud freedom



## Security and Data Protection

Real-time embedded data anonymization technology lets you squeeze maximum value from all your data while supporting compliance with increasingly strict data protection regulations. Robust authentication, user management, and authorization protocols help ensure that users access only the data they have permission to see and handle. Extended Lightweight Directory Access Protocol (LDAP) integration enables automated user provisioning and native LDAP authentication. Combined with sophisticated encryption for data both at rest and in motion,

these techniques give SAP HANA solid security against cyberattacks and unauthorized data access. Dynamic data masking for tables and views lets you display only what each user is authorized to see. Data access can be recorded in the standard auditing framework. And since complex security authorizations can be easily shared between native applications and extensions running on SAP HANA and SAP business applications, developers can create innovative applications on SAP HANA covered by the same 360-degree security strategy.



Real-time embedded data anonymization technology lets you **squeeze maximum value from all your data** while supporting compliance with increasingly strict data protection regulations.

## Tally the Benefits of Deploying SAP HANA

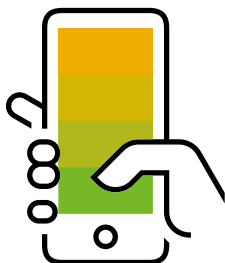
Companies worldwide use SAP HANA to transform their business and create value. To deliver timely action and to accelerate with simplicity, SAP HANA can help you unleash next-level performance with a simple, all-in-one, in-memory computing, no-compromise business data platform.

To support situational awareness, SAP HANA provides next-generation HTAP with the broadest advanced analytics so that you can act and decide with live intelligence. SAP HANA allows you to act smarter by developing live, intelligent applications with the most comprehensive analytical processing, including machine learning.

To innovate with confidence, SAP HANA offers a comprehensive application development framework with the most advanced real-time data protection and privacy that allows you to safely adapt to change and to know without seeing.

To achieve cloud acceleration, SAP HANA is the hybrid and multi-cloud data platform that gives you freedom to move to the cloud at your pace without cloud vendor lock-in. SAP HANA allows you to adapt to change safely by embracing a next-generation business data platform for any cloud environment.

At the same time, it lets you simplify your IT landscape and reduce effort by consolidating multiple workloads onto the business data platform. With its robust architecture, SAP HANA is the business data platform that gives you real-time insight into live transactional data. With SAP HANA, you can deliver the revolutionary solutions needed immediately – with drastically reduced complexity and infrastructure demands.



With its robust architecture, SAP HANA is the business data platform that **gives you real-time insight** into live transactional data.



Follow us



[www.sap.com/contactsap](http://www.sap.com/contactsap)

Studio SAP | 58694enUS (19/01)

© 2019 SAP SE or an SAP affiliate company. All rights reserved.

No part of this publication may be reproduced or transmitted in any form or for any purpose without the express permission of SAP SE or an SAP affiliate company.

The information contained herein may be changed without prior notice. Some software products marketed by SAP SE and its distributors contain proprietary software components of other software vendors. National product specifications may vary.

These materials are provided by SAP SE or an SAP affiliate company for informational purposes only, without representation or warranty of any kind, and SAP or its affiliated companies shall not be liable for errors or omissions with respect to the materials. The only warranties for SAP or SAP affiliate company products and services are those that are set forth in the express warranty statements accompanying such products and services, if any. Nothing herein should be construed as constituting an additional warranty.

In particular, SAP SE or its affiliated companies have no obligation to pursue any course of business outlined in this document or any related presentation, or to develop or release any functionality mentioned therein. This document, or any related presentation, and SAP SE's or its affiliated companies' strategy and possible future developments, products, and/or platforms, directions, and functionality are all subject to change and may be changed by SAP SE or its affiliated companies at any time for any reason without notice. The information in this document is not a commitment, promise, or legal obligation to deliver any material, code, or functionality. All forward-looking statements are subject to various risks and uncertainties that could cause actual results to differ materially from expectations. Readers are cautioned not to place undue reliance on these forward-looking statements, and they should not be relied upon in making purchasing decisions.

SAP and other SAP products and services mentioned herein as well as their respective logos are trademarks or registered trademarks of SAP SE (or an SAP affiliate company) in Germany and other countries. All other product and service names mentioned are the trademarks of their respective companies.

See [www.sap.com/copyright](http://www.sap.com/copyright) for additional trademark information and notices.